

Woodville Primary School

WEEK ENDING Friday 12th June 2020

NEWSLETTER Number 9

33 – 57 Warringa Crescent, Hoppers Crossing

Phone: 9749 2770

Website: www.woodvilleps.vic.edu.au

School Council President: Amy Claughton

Before and After School Care: Camp Australia: 1300 105 343 www.campastralia.com.au



CALENDAR OF EVENTS – IMPORTANT DATES

TERM TWO

Canteen is open for term two – NEW MENU – see website

NO WINDOW SALES – Students must write out a lunch order on a brown paper bag.

Wednesday 24 th June	School Nurse visit
Friday 26 th June	Last day of term two - 2pm dismissal
TERM THREE	
Monday 13 th July	Term three begins!

A message from the Principal Class Team...

Dear Parents and Carers,

It is wonderful to have all of our students back at school learning on site. The children have transitioned to on-site learning smoothly and have adjusted well to the new rules and routines in place.

Congratulations to Krissy V, from 56B who has been selected to take over the position of Student Representative Councillor for her class. We are sure that Krissy will be a responsible student voice on behalf of her peers and an enthusiastic and valuable member of the SRC.



Congratulations to year 4 student Mitchell who was selected [Member of the Month](#) by the Geelong Football Club.

Just a reminder that the gate your child/children will use to enter and exit the school is based on the location of your only or youngest child's classroom.

Warringa Crescent gate - Block A - the office building (Grades 34A, 34B, and all 56 grades)

Powell Drive gate -Block B (12A, 12B, 12C, 12D, 34C, 34D, 34E, 34F)

Madison Drive gate - BER (All Prep grades and Grades 12E, 12F, 12G)

'Only' children dismissed at 2.45pm.

Family groups dismissed from the youngest child's designated gate at 2.55pm

Children who walk/ride from home to school will leave by designated gates at 3.00pm

Please ensure that you stay a safe 1.5metres social distance when waiting outside the school to collect your child/children.

Stay safe and well,

Lyn, Nadia and Jodi
Principal Class Team



It's so lovely to have the students back!

As part of their remote Visual Art learning, the grade five and six students were given the task of attempting the 'Between Art and Quarantine' challenge (#betweenartandquarantine).

This is an online phenomenon that started during the COVID-19 isolation period, as a way for people all over the world to keep themselves amused.

These students did a great job.

Ms Nott
Visual Arts teacher



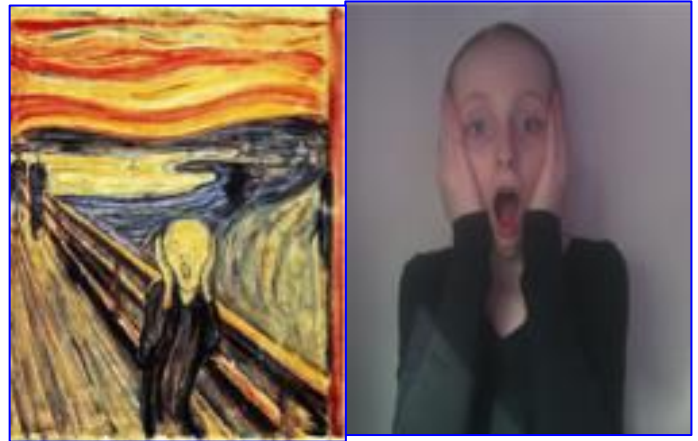
Oli W - Vincent Van Gogh,
Self-portrait with straw hat



Kisha R – Magritte



Alex P – Picasso, Old Man with Guitar



Skye C- Munch, The Scream

Canteen News

Please note that there will be no window sales at the canteen. Students must order their lunch using a brown paper bag and put it in the lunch basket when they enter the classroom.

There will also be no canteen credit. Please ensure you have the correct amount of money to avoid disappointment.

Gold Slips – Awarded to students for recognition of remarkable effort.

Prep	00A	Adam W-P	Jason M
	00B	Keri Jean C	Jaiden W
	00C	lisa H	Ina K
	00D	Annabella M	Lily W
Grade 1 & 2	12A	Khloe W	Hannah
	12B	Sarah E	Yacoub El D
	12C	Noah Mc	Beatrice K
	12D	Jayden S	Maisy G
	12E	Daakshya K	Amelie Y
	12F	Dexter C	Hei Do H
	12G	-	-
Grade 3 & 4	34A	Summer T	Rim T
	34B	-	-
	34C	-	-
	34D	-	-
	34E	Skye O'B	Eh Mwe H
	34F	-	-
Grade 5 & 6	56A	-	-
	56B	Krissy V	Yanis Y
	56C	-	-
	56D	Abbi W	Loe Loe
	56E	Maggie M	Tyler K
SPECIALISTS	Visual Art	-	-
	LOTE	K'Lee Jayao L Blake T	Heath K Blake T Blake C
	Music	Abbi C	Lily S
	Prep Specialists	-	-

Gates and Dismissal Times

Children must enter and exit the school from designated gates at specific times. Please bring your child/ children to their designated gate between 8.40am and 8.50am where they will be greeted by a member of staff and allowed into the school grounds. There are marks on the footpaths where you may stand and wait whilst maintaining 1.5m from other adults. It is 'kiss and go' at the gate. Please do not linger as you will appreciate we will have many children and families waiting to enter. It is critical we maintain social distancing amongst adults.

If you have only one child at the school, he/she will need to be picked up from the designated gate at 2.45pm (15 minutes earlier than usual). You will need to come to the designated gate – children will only be released when we see you at the gate. This is to ensure their safety once children are out of the school grounds. Again, we ask that you do not stay chatting in the area, as dismissal of families will commence at 2.50pm.

If you have more than one child at school, your children will be dismissed from 2.55pm at their designated gate. All will be together in a group so you do not have to wait in line any longer than necessary. **Again, your children will not be allowed to leave the school grounds until we see you lining up at the gate.**

Children who walk or ride to and from home to school independently will be dismissed at 3.00pm. They will also enter and leave the school grounds from designated gates. If you normally park at the shops or elsewhere and get your children to walk to you, we request that you walk to the designated gate and wait there instead. **Please ensure your children do not arrive prior to 8.40am, as gates will be locked.**

We recognise that this will present challenges in many ways. However, the threat of COVID-19 remains very real and we must do all we can to protect everyone in the community.